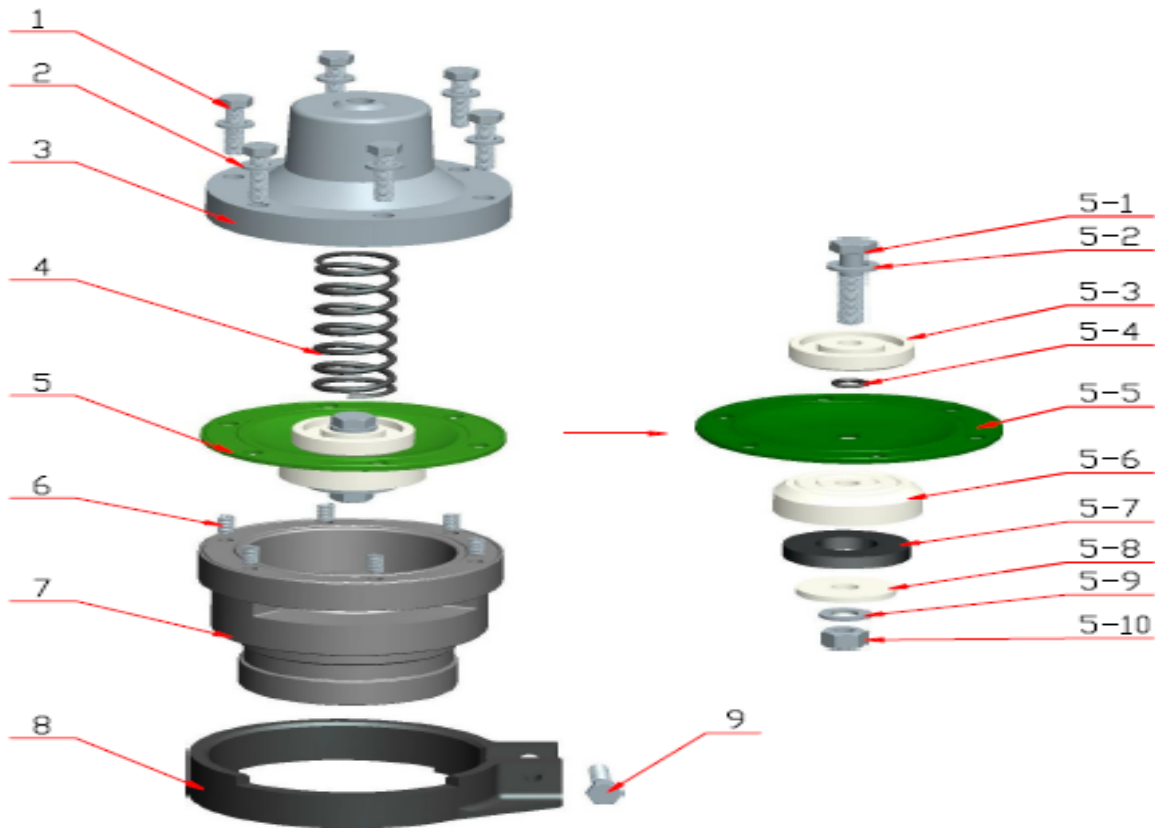


# 3" SMALL GROOVED SPRAY HEAD - AIR OPERATED

#GROOVESML3



## Spray Head

Part No.	Description	Qty
SV2-1	SS Bolt	6
SV2-2	Washer	6
SV2-3	Hood	1
SV2-4	Spring	1
SV2-5	Diaphragm Insert	1
SV2-6	Helicoil	6
SV2-7	Base	1
SV2-8	Adjustable Ring	1
SV2-9	SS Bolt	1

## Diaphragm Insert Kits

Part No.	Description	Qty
SV2-5-1	SS Bolt	1
SV2-5-2	Washer	1
SV2-5-3	Upper Disc	1
SV2-5-4	O-Ring	1
SV2-5-5	Diaphragm (PVC)	1
SV2-5-6	Lower Disc	1
SV2-5-7	Seal Washer(NBR)	1
SV2-5-8	Retained Gasket	1
SV2-5-9	Washer	1
SV2-5-10	SS Locking Nut	1

---

## **3" SMALL GROOVED SPRAY HEAD - AIR OPERATED**

#GROOVESML3



### **Description (Small Spray Head):**

- Roll Groove 1/4"BSP for air intake.
- Air pressure to close the valve is 100 PSI.
- Water pressure to open the valve is 60 PSI.
- Output capacity is up to 500litres per minute
- Spray discharge is up to 12metres (40 feet)
- Spray width is up to 11metres (36 feet).
- Precision cast aluminum which eliminates rust and corrosion
- Water discharge is adjustable